

Scott Granneman

Internet Explorer 5 Configuration

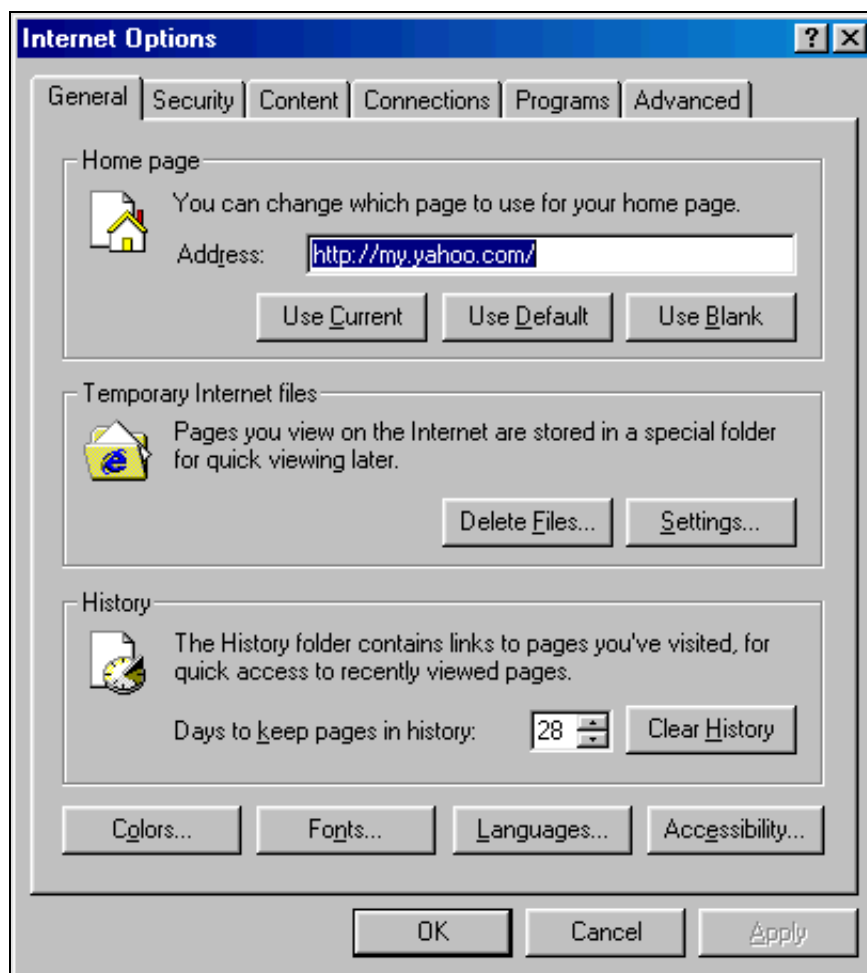
This is an overview explaining how to configure Microsoft's Internet Explorer 5 Web browser. It was originally prepared for a client on 17 August 1999. Now that IE is up to version 6, some of the advice given here may be outdated. However, the general principles still hold.

As you go through this document, compare your Internet Options to the pictures on this page. Make the changes necessary to your Internet Options so that it matches what you see here. To help with that process, you may want to print this page out first.

If you're ready, let's go!

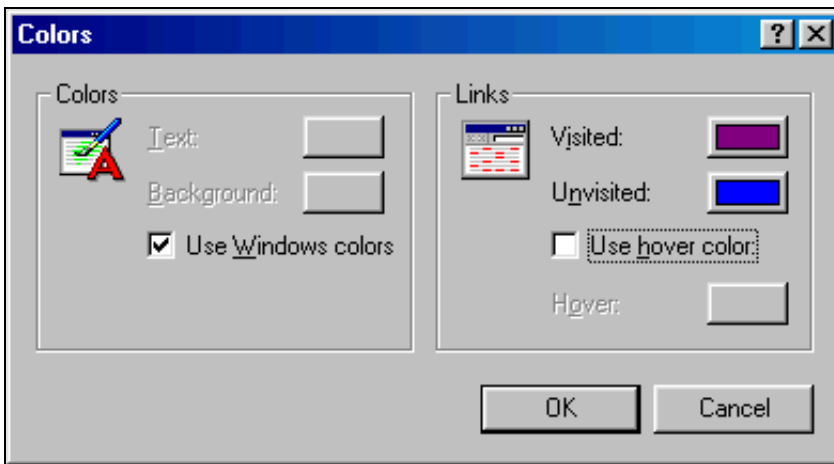
Open Internet Options using one of the following methods:

1. Open IE > Tools menu > Internet Options
2. Start > Settings > Control Panel > Internet Options



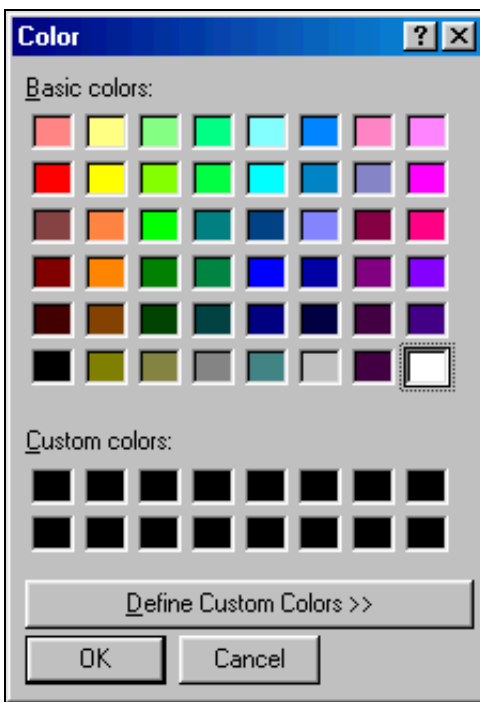
Change the **Address** in the **Home page** section to the home page you want your users to use. I use <http://my.yahoo.com> - a lot of people I know use <http://www.yahoo.com> or <http://www.google.com>.

Click on the **Colors ...** button.



Check **Use hover color**. I would leave the Hover color as red.

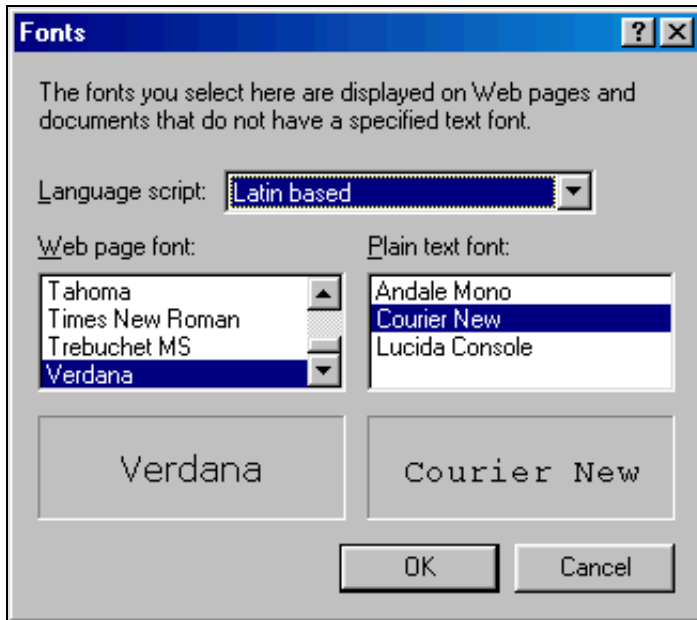
Uncheck **Use Windows colors**.



Click on white, in the bottom right of the **Basic colors**. Click **OK**.

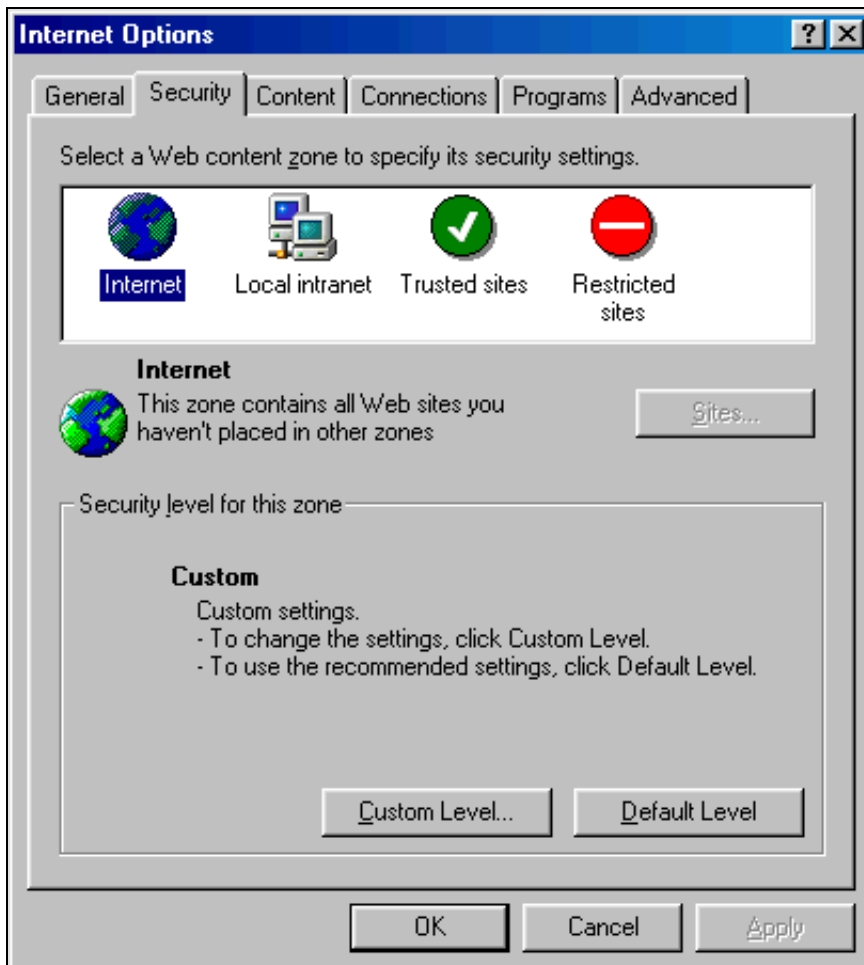
Click **OK**.

Click on the **Fonts ...** button.

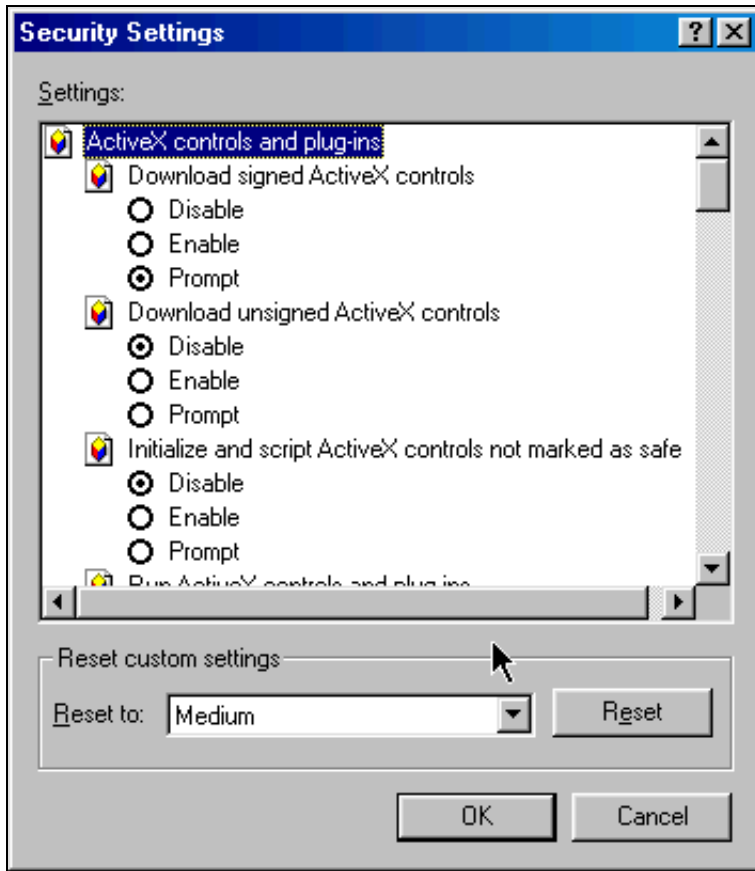


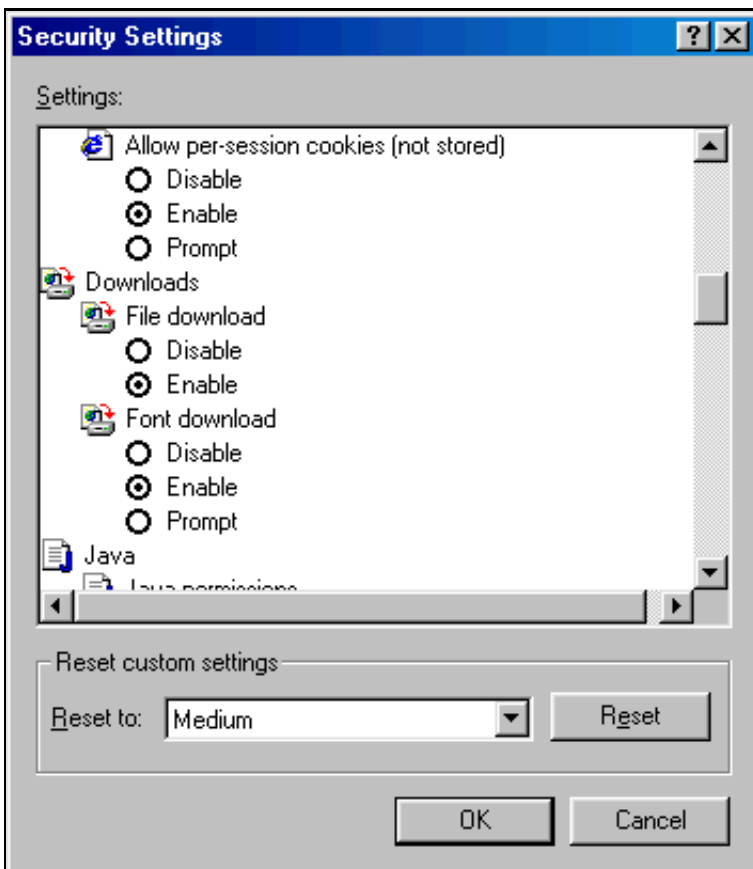
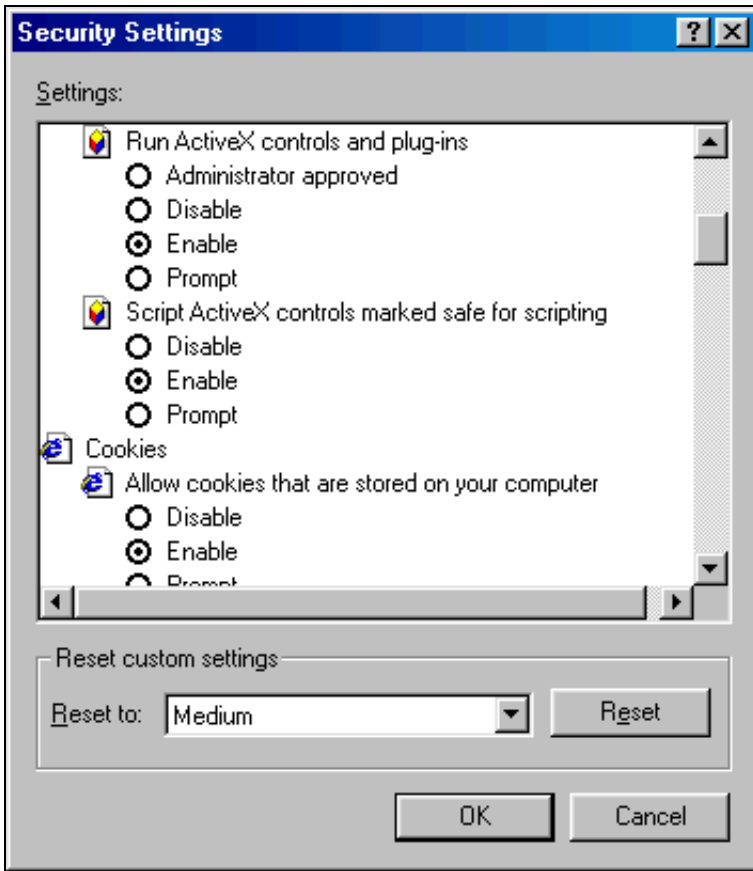
Change the **Web page font** to Verdana or Trebuchet MS or Arial. All are fine choices for viewing Web pages. We use Trebuchet MS, but that font does have a funky "&" character that some people don't like. Click **OK**.

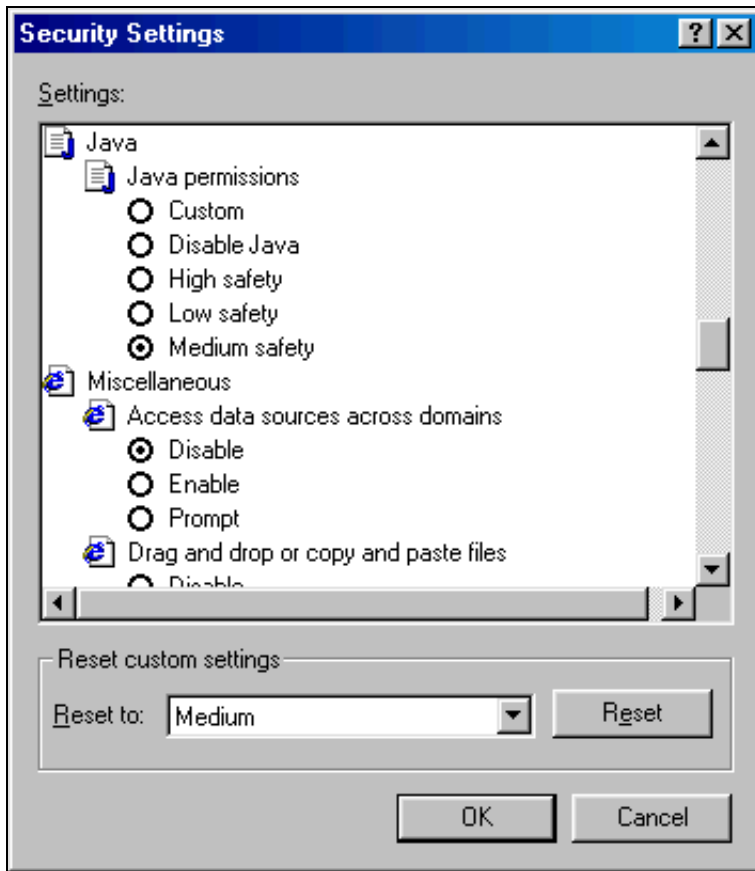
Click on the **Security** tab.



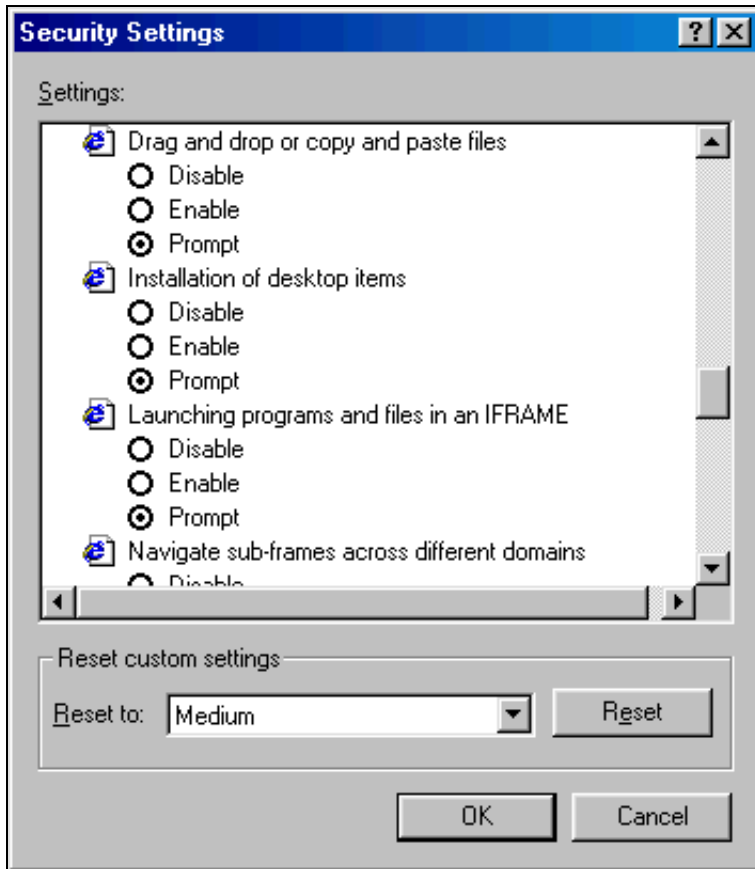
Make sure you've chose **Internet** under **Select a Web content zone to specify its security settings**. Click on **Custom Level ...**



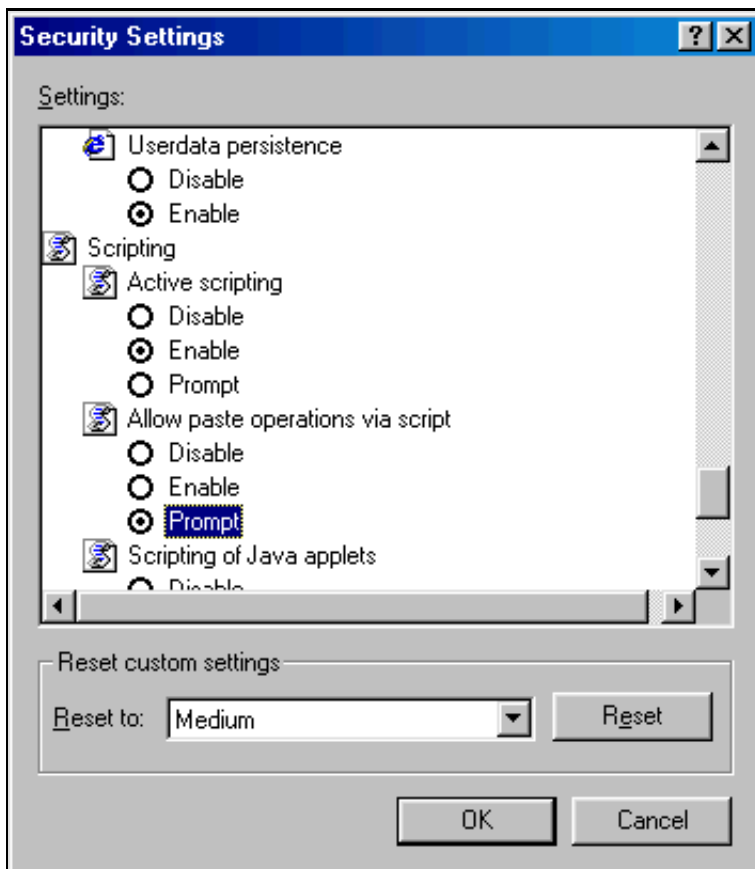
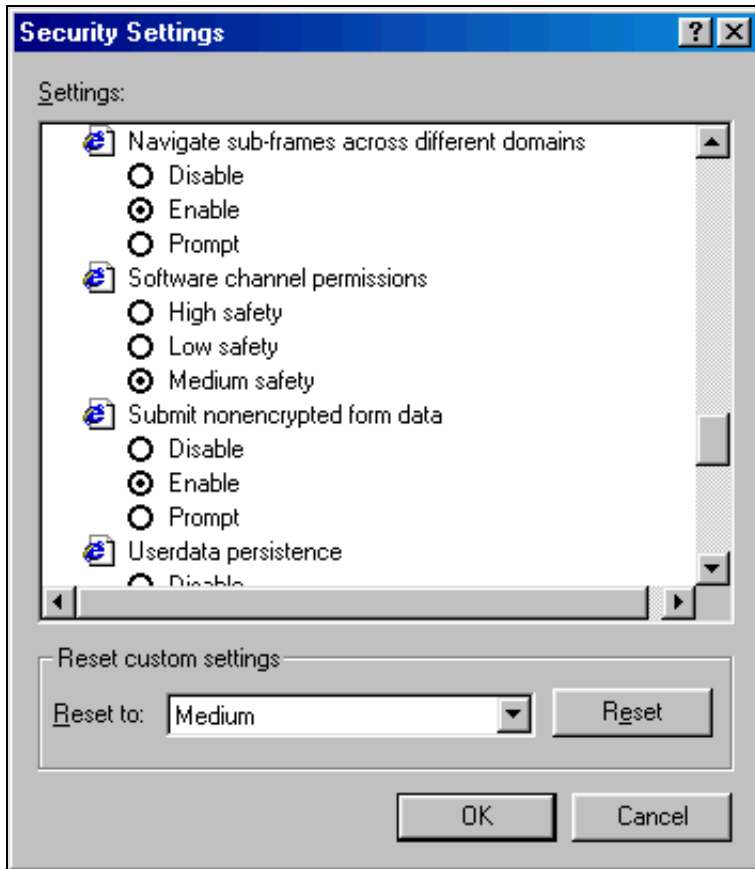




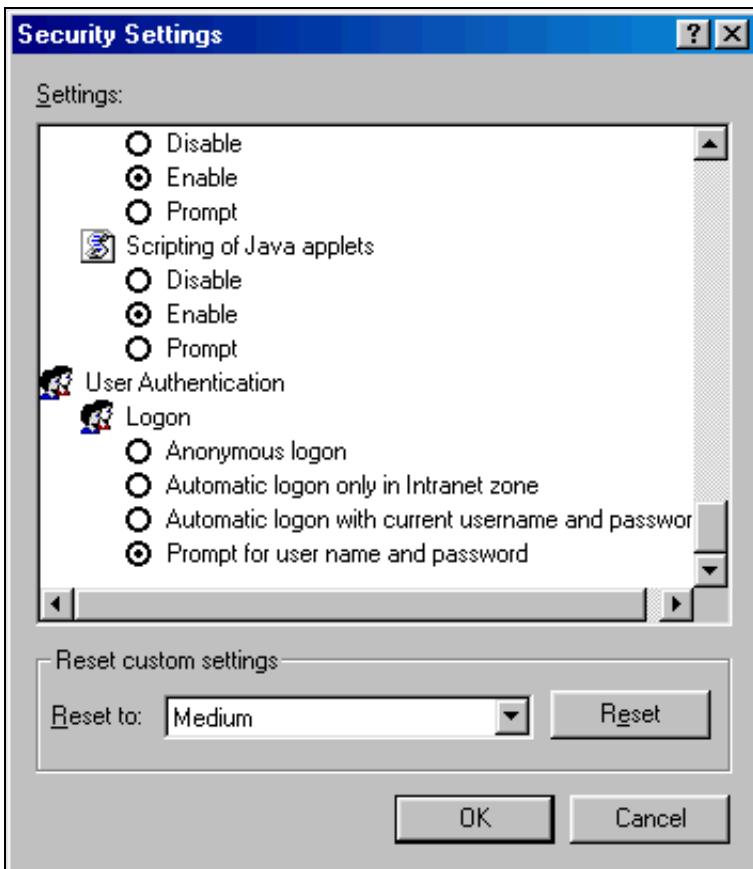
Notice that we would change **Java permissions** to **Medium safety**.



For security reasons, it is important that you change **Drag and drop or copy and paste files** to **Prompt**.



For security reasons, it is important that you change **Allow paste operations via script** to **Prompt**.

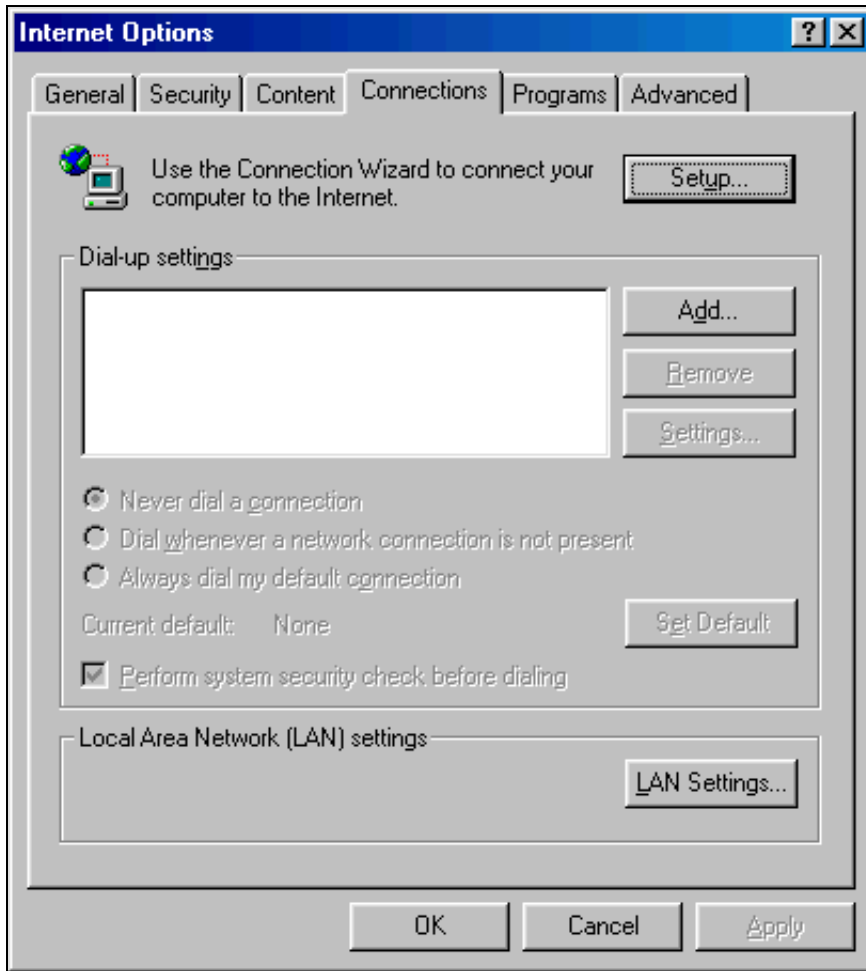


Click **OK**. Click **Yes** if it asks you if you want to change security settings for this zone.

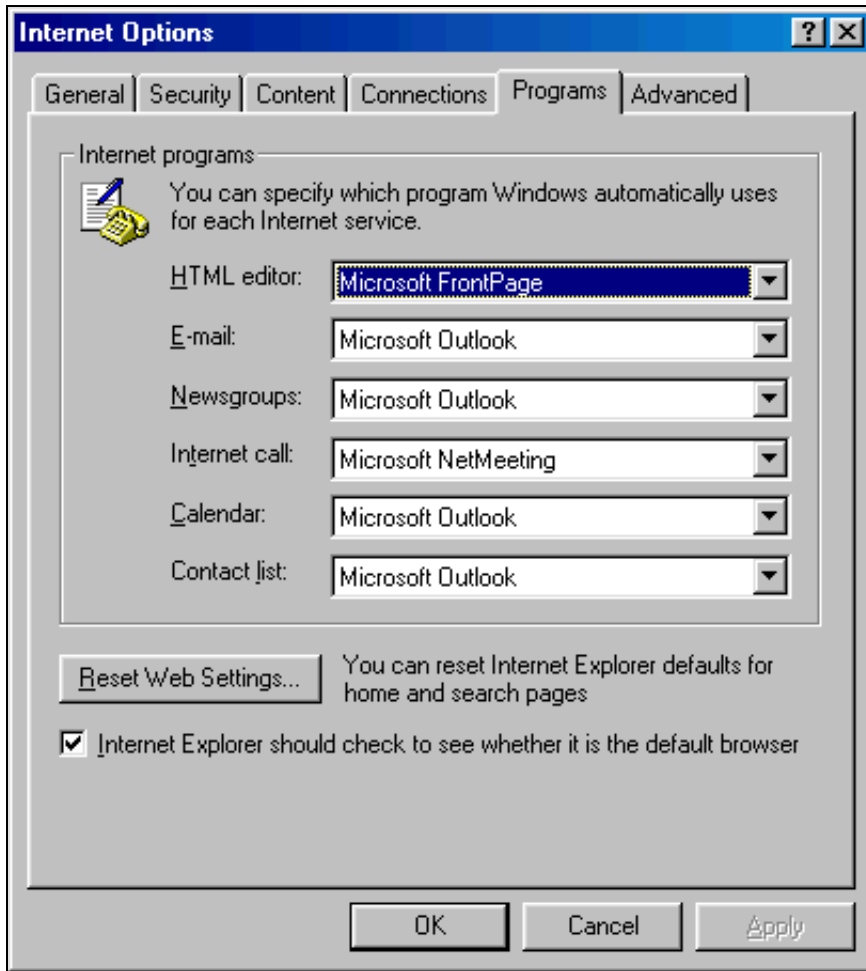
Click on the **Content** tab.



Click on the **Connections** tab.



Click on the **Programs** tab.



For computers using Microsoft Office, make sure that the following associations exist under Internet programs:

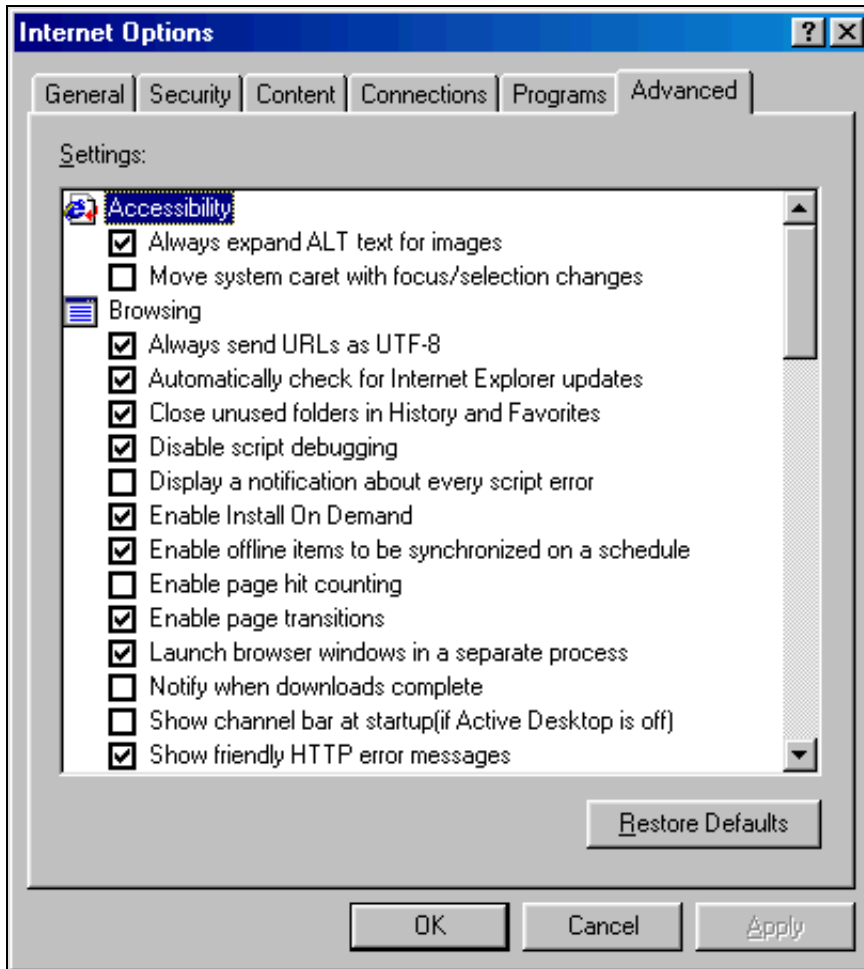
- **E-mail, Newsgroups, Calendar, and Contact list** = "Microsoft Outlook"
- **Internet call** = "Microsoft NetMeeting"
- **HTML editor** = "Microsoft FrontPage"

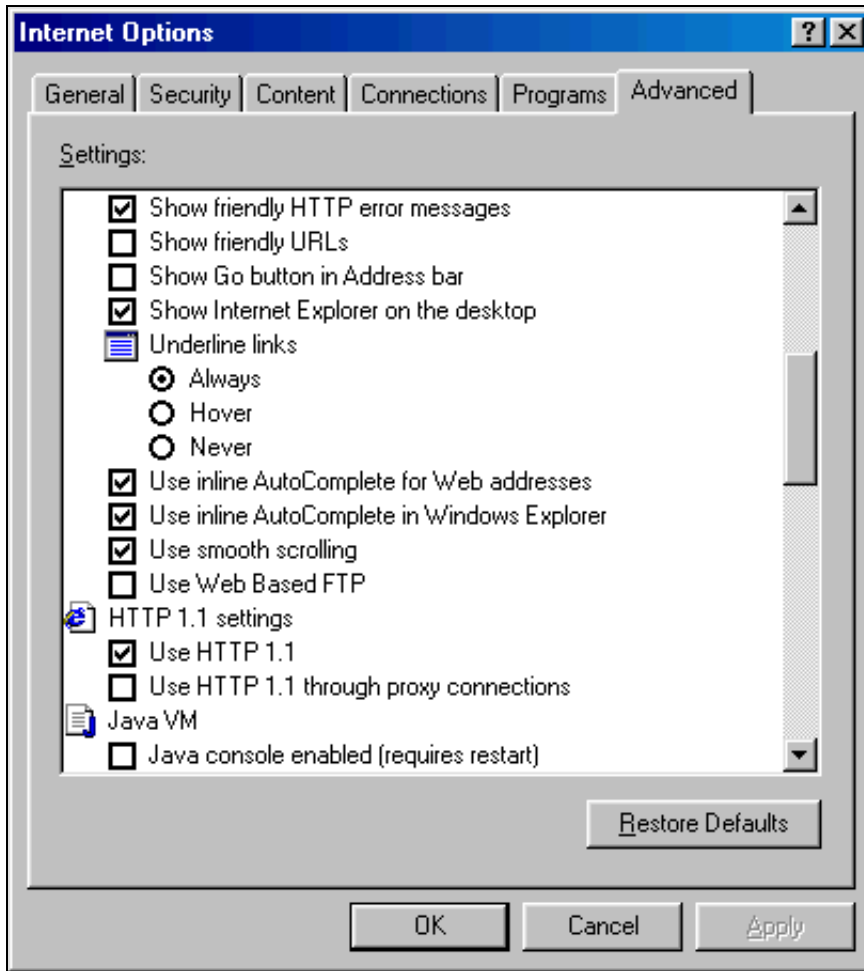
For computers that do not use Microsoft Office, make sure that the following associations exist under Internet programs:

- **HTML editor** = "Windows Notepad"
- **E-mail** = "Outlook Express" or "Hotmail"
- **Newsgroups** = "Outlook Express"
- **Internet call** = "Microsoft NetMeeting"
- **Calendar** = blank
- **Contact list** = "Address book"

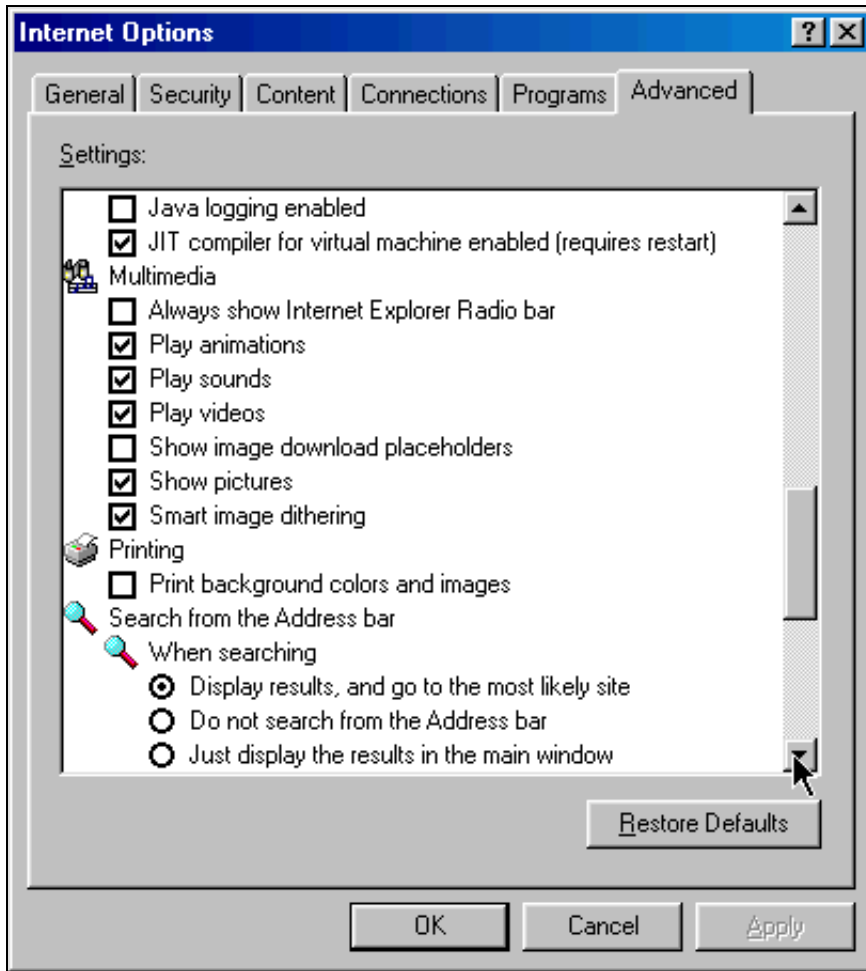
Note that if you develop Web pages, you will probably want another program under **HTML editor**. For instance, we use a combination of Dreamweaver and HomeSite. However, IE does a poor job of recognizing other HTML editors on your computer and inserting them into the list. You can manually insert others into this list, but that involves changing the registry. [Instructions about this can be found at Allaire's Web site.](#)

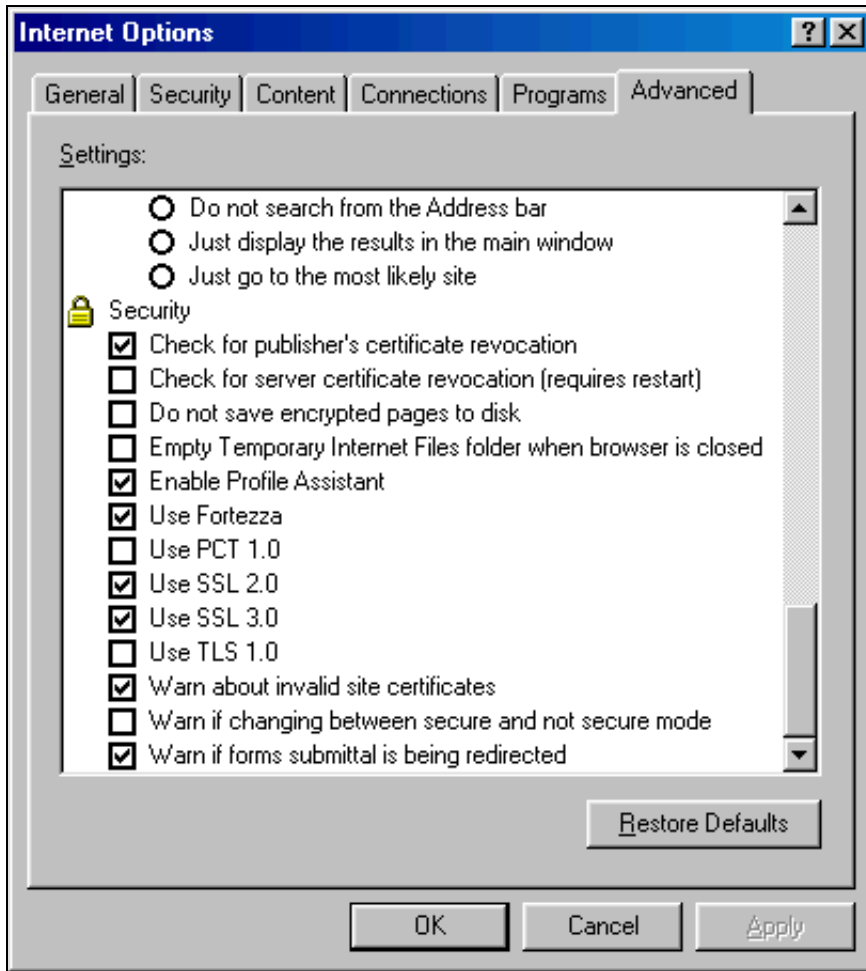
Click on the **Advanced** tab.





You may want to check **Show friendly URLs**. We would recommend unchecking **Show Go button in Address bar**, although some people really like this. Although it's not shown in the above picture, we strongly recommend unchecking **Use smooth scrolling**. It amazes me that **Use smooth scrolling** is on by default - most people hate that so-called feature!

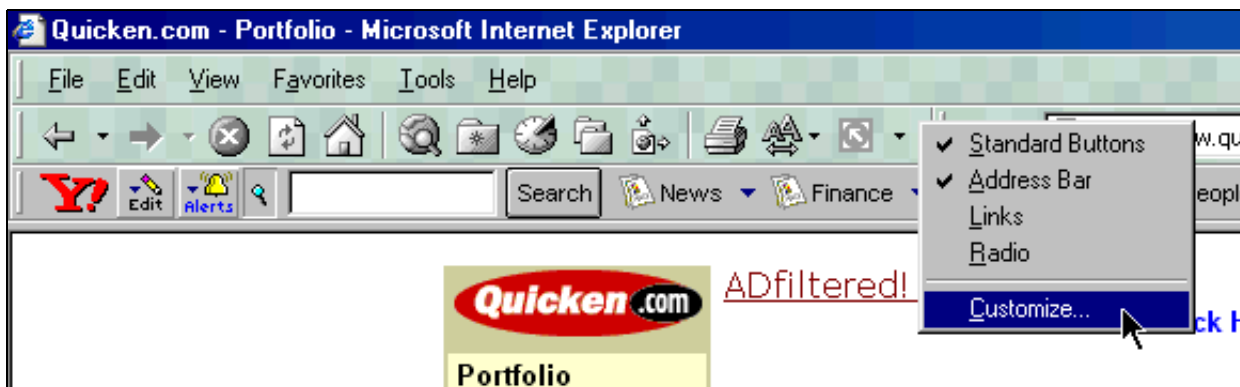




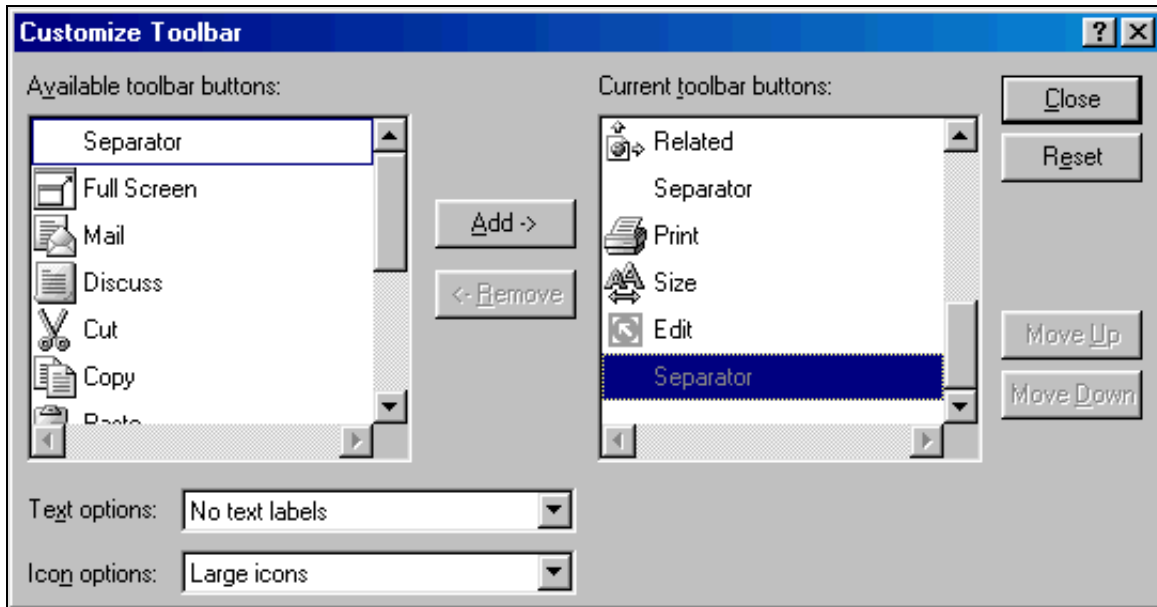
For security, I would check **Check for publisher's certificate revocation**. And, although it's not shown in the picture above, you should also check **Check for server certificate revocation**. Actually, it boggles my mind that these are unchecked by default - these are pretty important things to know about a secure server!

Click **OK**.

Now you need to set the buttons that appear on the IE toolbar. Right-click on the toolbar by one of the buttons, so that the contextual menu appears, as below:



Choose **Customize ...**



For **Text options**, you may want to choose **Selective text on right**, although we use **No text labels**. As for **Current toolbar buttons**, I would remove **Mail**, **Full Screen**, and **Discuss**, and add **Size** and **Folders**.

That's it - you have now configured Internet Explorer 5!